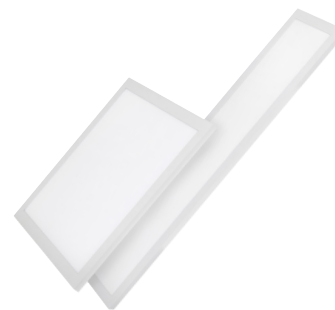




BRIGHTER MORNINGS FLUSH MOUNT PANEL

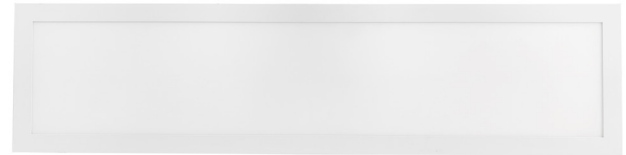
LEDVANCE now offers a Flat Panel for residential applications! CCT Selectable (3000K, 4000K and 5000K), our new 1x4 and 2x2 Value Class Flush Mount Panel has an integrated driver design that allows for an ultra-thin modern look while keeping a high quality customizable light. It can be installed in a junction box and is ideal for kitchens and other residential areas.

VALUE CLASS



For more information, visit www.ledvanceUS.com/luminaires

LEDVANCE LLC
181 Ballardvale Street, Suite 203
Wilmington, MA 01887 USA
Phone 1-800-LIGHTBULB
(1-800-544-4828)



ORDERING INFORMATION

Item Number	Ordering Abbreviation	Wattage	Total Fixture Lumens	LPW	Input Voltage	Dimming	Color Temperature	CRI	Beam Angle
62605	PANELF6A/046ST8SC214/FM/WH	46	Up to 4200	91	120V	Phase-Cut	3000/4000/5000K	>80	110°
62753	PANELF6A/046UNV8SC222/FM/WH	46	Up to 4200	91	120-277V	Non-dimming	3000/4000/5000K	>80	110°

CONTRACTOR BENEFITS

- CCT Selectable for application versatility and easier inventory management
- Ultra-thin design with integrated driver for installation in junction box
- All mounting hardware for flush mount application included in the packaging

PRODUCT FEATURES

- Ultra thin and modern design with an integrated driver
- CCT Selectability allows for customizable light – 3000K, 4000K or 5000K selectable via accessible switch on the side of the product
- ENERGY STAR® listing maximizes rebate opportunities and ensures high-quality light
- Up to 91 LPW
- CRI >80
- Offered in 46 watts and 4200 lumens
- 110° beam angle
- Energy savings up to 53%



SCAN TO FOLLOW US
ON SOCIAL MEDIA

LEDVANCE is a registered trademark. All other trademarks are those of their respective owners. Specifications subject to change without notice.

Scan the QR tag to view
or download additional
product information

