

LEDVANCEUS.COM



LEDVANCE

OPTI-SELECT
LIGHTING SOLUTIONS
**CHANGE
DISTRIBUTION
IN SECONDS**

OPTISELECT



EXPERIENCE THE CONVENIENCE OF OPTI-SELECT



Breakthrough OPTI-SELECT technology lets you change light distribution quickly and easily, with the turn of a switch or twist of the wrist. No lens or reflector swap, no need to open the luminaire or lamp.

Whether you're installing area lights, bollards, track lights, wall cylinders, high bays, wall packs, floodlights or PAR38s, you can dial up exactly the right distribution and aiming that each lighting job requires. You'll not only save time; you'll also maximize the life of your luminaire or lamp by making sure that moisture never has a chance to get in.



PERFORMANCE CLASS OPTI-SELECT AREA LIGHT

The industry-first OPTI-SELECT AREA LIGHT gives you three CCTs, three lumen outputs, plus three switch-selectable optical distributions (Type III, IV, and V). That's 27 SKUs in a single product—ensuring unmatched flexibility and performance for just about any outdoor area lighting application. The luminaire is available in bronze, black, and white finishes, with an integrated 7-pin NEMA receptacle, LEDVANCE LINK™ Bluetooth® compatibility and field-installable screw-in sensors.



PERFORMANCE CLASS DUAL SELECTABLE OPTI-SELECT BOLLARD

Looking for today's most flexible lighting solution for walkways, gardens, parking lots and other outdoor areas? The LEDVANCE BOLLARD luminaire lets you choose full zone illumination, or OPTI-SELECT switch-selectable 90°, 180°, 270° and 360° light distribution. Available in bronze, black, white, and gray finishes to meet your design needs, you also get wattage and CCT selectability, an integrated photocell, and optional emergency battery backup.





PERFORMANCE CLASS OPTI-SELECT CYLINDER

The OPTI-SELECT CYLINDER wall luminaires are a stylish and versatile choice for facades, entryways and wall wash applications. In addition to CCT and wattage selectability, they offer switch-selectable beam angles (narrow, medium and wide), and Up, Down, or Up+Down light modes. Available in bronze, black, and white finishes and 3", 4", and 6" sizes, they include an integrated photocell that can be disabled via an On/Off switch.



PERFORMANCE CLASS OPTI-SELECT FLOODLIGHT

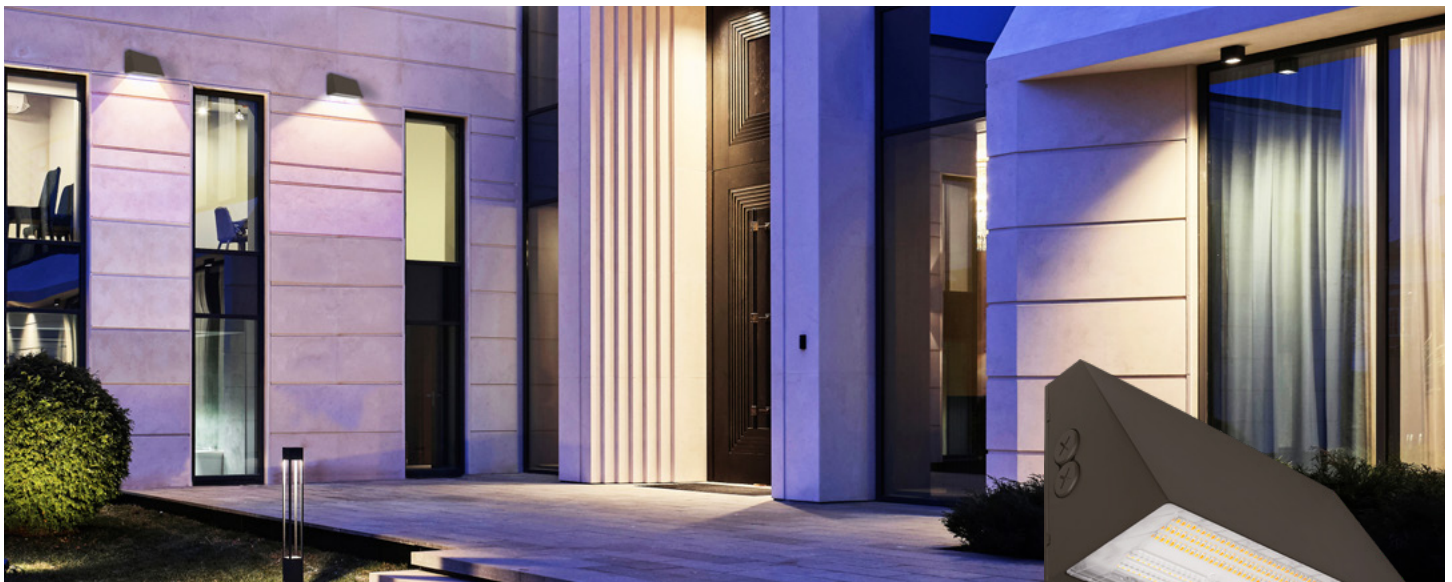
The OPTI-SELECT FLOODLIGHT is a perfect blend of our renowned LEDVANCE FLOODLIGHT and the cutting-edge OPTI-SELECT feature. This versatile product offers three wattages, three CCTs, and three beam angles, all in one package. With narrow, medium, and wide optical distributions, the OPTI-SELECT FLOODLIGHT family also includes the FLEX MOUNT system, providing two mounting options right out of the box. Additionally, it features an integrated photocell for lower wattages or a 3-pin NEMA receptacle for higher wattages. Experience the ultimate flexibility and performance with the OPTI-SELECT FLOODLIGHT!





PERFORMANCE CLASS OPTI-SELECT NON-CUTOFF WALL PACK

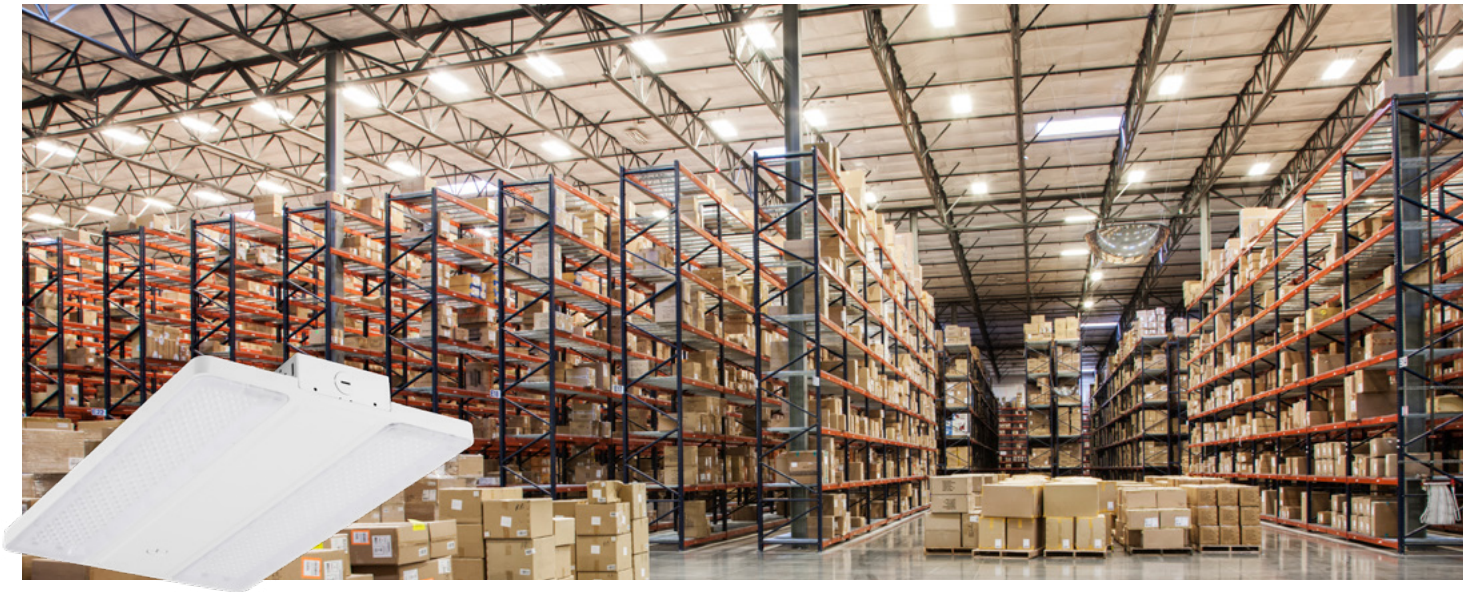
Built for maximum application flexibility, the OPTI-SELECT WALL PACK is not only wattage and CCT selectable; convenient OPTI-SELECT technology lets you choose narrow, medium or wide distribution with just the flip of a switch. An ideal solution for walkways and building façades, as well as parking lots and perimeters, the versatile luminaire features an integrated photocell and accommodates field-installable standalone sensors and controls without additional wiring.



PERFORMANCE CLASS OPTI-SELECT CUTOFF WALL PACK

With its full cutoff design, the OPTI-SELECT CUTOFF WALL PACK eliminates uplight to reduce glare and light pollution. For unmatched precision, innovative OPTI-SELECT technology lets you instantly switch between Type II, III, and IV distributions—no lens swaps required. Offering CCT and wattage selectability, an integrated photocell, and plug-and-play controls compatibility, it's today's most versatile solution for efficient, adaptive outdoor lighting.





VALUE CLASS OPTI-SELECT LINEAR HIGH BAY

The OPTI-SELECT LINEAR HIGH BAY combines style, precision, and adaptability, and features wattage, CCT and distribution selectability. Ideal for warehouse applications, school gyms, municipalities, and corridors, OPTI-SELECT technology lets you choose wide distribution or aisle distribution at the flip of a switch to easily, to instantly, create a tailored lighting experience for virtually any space. The luminaire ships controls-ready, and is compatible with field-installable LEDVANCE LINK™ components.



VALUE CLASS OPTI-SELECT UFO HIGH BAY

The OPTI-SELECT UFO HIGH BAY is the first “all-selectable” fixture of its kind. It features wattage and CCT selectability, as well as OPTI-SELECT beam angle adjustment—so a single solution can deliver custom-tailored lighting for just about any area, from warehouse aisles to open areas. Designed for easy, safe installation, the fixture is ready for an optional, screw-in motion/daylight sensor, and is compatible with field-installable LEDVANCE LINK™ components.





PERFORMANCE CLASS SELECTABLE TRACK LIGHT

Delivering high quality illumination for just about any commercial or industrial track lighting application, these elegant luminaires are available with time-saving OPTI-SELECT functionality that lets you change beam angles simply by twisting the lamp's head. Customize even further with four CCTs and dual wattage selectability. They come in black and white finishes, with a wide range of accessories and 2-, 4-, and 8-foot track lengths.



LED TRUWAVE® PAR38

TruWave offers the best alternative to natural light by mimicking the natural light spectrum, all while saving energy. TruWave delivers less intense blue light for reduced eyestrain and improved sleep wake cycles. Offering exceptional color quality without the loss of efficacy typical of most 90+ CRI solutions, the CCT Select option delivers five different CCTs (2700/3000/3500/4000/5000K) via Toggle switch located on the lamp to easily change between CCTs. The OPTI-SELECT feature allows you to adjust the beam angles from 15°, 25° or 40°.



With offices in more than 50 countries and business activities in more than 140 countries, LEDVANCE is one of the world's leading general lighting providers for professional users and end consumers. In North America, LEDVANCE LLC offers a wide range of SYLVANIA LED luminaires for various applications, intelligent lighting products for Smart Homes and Buildings, one of the largest LED lamps portfolios in the industry, and traditional light sources. Further information can be found at www.ledvanceUS.com.



HELPFUL RESOURCE

VISIT OUR OPTI-SELECT LANDING PAGE



LEDVANCE LLC
181 Ballardvale Street, Suite 203
Wilmington, MA 01887 USA
Phone 1-800-LIGHTBULB (1-800-544-4828)
www.ledvanceUS.com

LEDVANCE and SYLVANIA are registered trademarks. The Bluetooth® word mark and logos are registered trademarks owned by the Bluetooth SIG, Inc. and any use of such marks by LEDVANCE LLC is under license. All other trademarks are those of their respective owners. Licensee of product trademark SYLVANIA in general lighting. Specifications subject to change without notice.



SCAN TO FOLLOW US
ON SOCIAL MEDIA