



# LEDVANCE EV CHARGERS

## LEVEL 2 COMMERCIAL CHARGING STATION

PHASE 

### LEDVANCE EV CHARGER SPECIFICATION DATA

Catalog #	Comments
Project	
Type	
Prepared by	

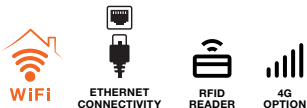


### APPLICATION

Perfect for facility managers of office, multi-residential, retail, education, hospitality, fleets and other business locations, the latest LEDVANCE PHASE EV Level 2 Commercial Charging Station combines fast, level 2 charging with multiple configurations and flexible mounting options to meet the needs of any installation.

### BENEFITS & FEATURES

- Available in 48 Amp and 80 Amp versions
- Level 2 fast charging with 11.5kW and 19.2kW maximum power output
- 4.3" color LCD touch screen with options for English, French and Spanish languages
- Large, bright LED status light
- 25-foot charge cable with SAE J1772 Type1 connector
- Versatile configurations available to meet the needs of most installations
- Rugged NEMA 4 and IP65 hardware enclosure, certified for outdoor and indoor use
- IK08 impact protection
- Built-in WiFi and Ethernet Connectivity
- Optional 4G module with Super SIM
- Optional ISO 15118-2/3 modules for Plug-and-Charge operation with EVs that include ISO 15118 capability
- Optional NFC Reader for contactless tap & charge payments
- Easy installation with secure wiring terminal blocks and all required hardware for wall mounting
- Available free-standing pedestal mounting options include single or double charger mounting, with or without cable management systems
- Pre-configured for use with an optional subscription to ChargeLab Charging Station Management software which offers property owners, fleet managers, and EV station owners a suite of features to control, monitor, and manage your chargers – including revenue collection, real-time analytics, 24/7 customer support, load-balancing management, and firmware updates
- Chargers can be configured for free-charging operation without the need for software subscriptions
- ENERGY STAR® certified



## SPECIFICATIONS

FEATURES AND FUNCTIONS	
Charging mode	Level 2
Vehicle connection	SAE J1772 (Type 1 connector)
Charging Cable length	25ft
COMMUNICATION	
Wireless Connectivity	Built-in WiFi (802.11 b/g/n/2.4GHz) / Bluetooth / Ethernet / 4G (Optional)
Communication Protocol	OCPP 1.6J / OCPP 2.0.1 ISO 15118-2/3 (Optional)
Firmware	Over-the-air (OTA) upgradable firmware
USER INTERFACE	
LCD Screen	4.3" Color LCD touch screen
Language Options	English/French/Spanish
LED Status Indicator	Dynamic LED light shows charging status: standby, vehicle connected, charging in progress, charging complete, fault indicator
Network Provider (CPO)	ChargeLab / Compatible with multiple CPOs*
User Authentication	RFID / QR code scan / CPO App / Optional NFC Tap & Charge / Free Plug & Charge configurable
ELECTRICAL DESIGN	
Power supply voltage	AC level 2, 208/240V
Rated frequency	60Hz
Rated output current	48A max or 80A max
Selectable output current settings	8/16/24/32/40/48 Amps for 48A units 8/16/24/32/40/48/56/64/72/80 Amps for 80A units
Power output	Max 11.5kW at 240 V <sub>ac</sub> for 48A Max 19.2kW at 240 V <sub>ac</sub> for 80A
Input connection	Hardwired – by licensed electrician 48A chargers can be wired through the bottom or through the back; 80A is wired through the bottom of the charger Secure L1, L2, and Ground terminal blocks
Primary input wire gauge	6 AWG copper for 48A units – 3 AWG copper for 80A units – Check with local regulations
Power requirements	208V (single phase), 240V (single phase)
Protection	UVP, OVP, RCD (CCID 20), SPD, OCP, OTP, Control Pilot Fault Protection
Ground fault protection	Yes, CCID 20
Surge protection	6kV
GENERAL DESIGN	
Environmental rating	NEMA 4 enclosure, IK08 impact protection
Ingress protection	IP65
Dimensions Main Enclosure (W x H x D)	15.83" x 9.61" x 4.64" (402 x 244 x 118mm)
Storage temp	-40°F to +185°F (-40°C to +85°C)
Operating temp	-40°F to +122°F (-40°C to +50°C)
Mounting	Wall Mount / Pedestal Mount (Optional)
Emergency Shut Off	Side mounted emergency shut-off/Reset button
METERING	
Accuracy	Embedded metering with +/- 1% accuracy Real Time Clock
CERTIFICATIONS AND STANDARDS	
Standards	cETLus, UL2594 compliant, UL991, UL1998, UL2231
EMC	FCC Part 15 Class B; CAN ICES-003(B)/NMB-003(B)
ENERGY STAR (EVSE v1.1)	Yes
Warranty	3 Years Limited Product Warranty

\*Contact your LEDVANCE sales representative for more information on alternative CPO networks

## ORDERING INFORMATION

ITEM #	ORDERING ABBREVIATION	DESCRIPTION
<b>48 AMP</b>		
75899	EVC/48A/LVL2/C2/OR	EV Charger, 48 Amp, Level 2, Commercial, Gen 2, Orange
75905	EVC/48A/LVL2/4G/C2/OR	EV Charger, 48 Amp, Level 2, 4G Module <sup>1</sup> , Commercial, Gen 2, Orange
75900	EVC/48A/LVL2/ISO/C2/OR	EV Charger, 48 Amp, Level 2, ISO 15118 compliant <sup>2</sup> , Commercial, Gen 2, Orange
75906	EVC/48A/LVL2/4G/ISO/C2/OR	EV Charger, 48 Amp, Level 2, 4G Module <sup>1</sup> , ISO 15118 compliant <sup>2</sup> , Commercial, Gen 2, Orange
75927	EVC/48A/LVL2/4G/CC/C2/OR	EV Charger, 48 Amp, Level 2, 4G Module <sup>1</sup> , NFC Reader for contactless payments <sup>3</sup> , Commercial, Gen 2, Orange
75901	EVC/48A/LVL2/ISO/CC/C2/OR	EV Charger, 48 Amp, Level 2, ISO 15118 compliant <sup>2</sup> , NFC Reader for contactless payments <sup>3</sup> , Commercial, Gen 2, Orange
75907	EVC/48A/LVL2/4G/ISO/CC/C2/OR	EV Charger, 48 Amp, Level 2, 4G Module <sup>1</sup> , ISO 15118 compliant <sup>2</sup> , NFC Reader for contactless payments <sup>3</sup> , Commercial, Gen 2, Orange
<b>80 AMP</b>		
75902	EVC/80A/LVL2/C2/OR	EV Charger, 80 Amp, Level 2, Commercial, Gen 2, Orange
75915	EVC/80A/LVL2/4G/C2/OR	EV Charger, 80 Amp, Level 2, 4G Module <sup>1</sup> , Commercial, Gen 2, Orange
75903	EVC/80A/LVL2/ISO/C2/OR	EV Charger, 80 Amp, Level 2, ISO 15118 compliant <sup>2</sup> , Commercial, Gen 2, Orange
75925	EVC/80A/LVL2/4G/ISO/C2/OR	EV Charger, 80 Amp, Level 2, 4G Module <sup>1</sup> , ISO 15118 compliant <sup>2</sup> , Commercial, Gen 2, Orange
75928	EVC/80A/LVL2/4G/CC/C2/OR	EV Charger, 80 Amp, Level 2, 4G Module <sup>1</sup> , NFC Reader for contactless payments <sup>3</sup> , Commercial, Gen 2, Orange
75904	EVC/80A/LVL2/ISO/CC/C2/OR	EV Charger, 80 Amp, Level 2, ISO 15118 compliant <sup>2</sup> , NFC Reader for contactless payments <sup>3</sup> , Commercial, Gen 2, Orange
75926	EVC/80A/LVL2/4G/ISO/CC/C2/OR	EV Charger, 80 Amp, Level 2, 4G Module <sup>1</sup> , ISO 15118 compliant <sup>2</sup> , NFC Reader for contactless payments <sup>3</sup> , Commercial, Gen 2, Orange

<sup>1</sup> See below regarding 4G installation

<sup>2</sup> ISO 15118-2/3 specifies the communication protocol between Electric Vehicles (EV) and the Electric Vehicle Supply Equipment (chargers).

EVs equipped with 15118 capabilities are able to use public charging stations without the need to scan a QR code or RFID, download an App, or enter a credit card.

<sup>3</sup> Internal Nayax NFC Reader supports multiple contactless payment methods including EMV® L1 and L2, Apple Pay®, and Google Pay®.

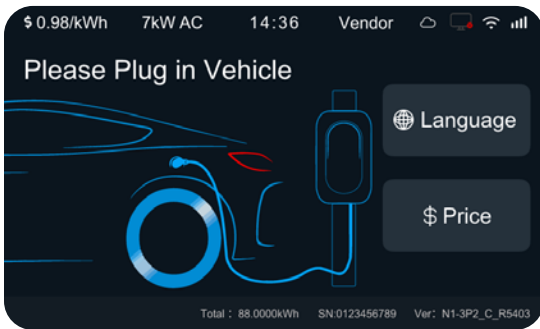
## 4G MODEL INSTALLATION — IMPORTANT INFORMATION

For installations that require a 4G network connection, the 4G signal **MUST BE TESTED** with a 4G Cellular Strength Signal Meter at the intended site **PRIOR** to installing the charger. The charger will not operate properly on a 4G network without a strong, reliable 4G signal with an RSRP reading of -90dBm or higher. LEDVANCE is not responsible for testing or ensuring the 4G signal strength.

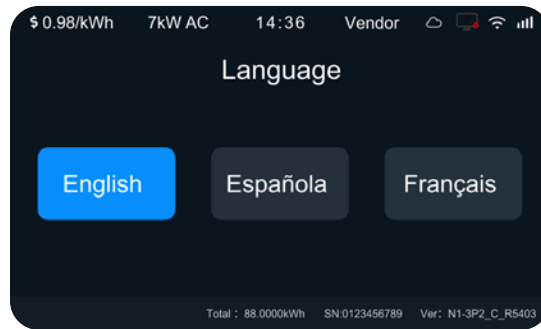
If a strong 4G signal is not available, the charger can be connected to a network via a strong WiFi signal or hard wired with an Ethernet cable – if a consistent, reliable internet connection is not available, an alternate installation location must be chosen.



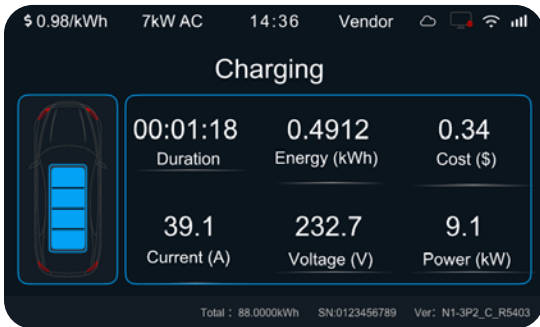
## USER INTERFACE\*



— Stand-By Touch Screen



— Touching the Language button brings up the 3 language options



— While charging, screen provides all current session data



— At the end of a session, a summary screen is temporarily displayed

\*Actual screen displays may vary slightly from the examples above

# CHARGELAB CHARGING STATION MANAGEMENT SOFTWARE

**SUBSCRIBE TO A CHARGELAB CHARGING STATION MANAGEMENT SOFTWARE PLAN TO UNLOCK THE POWERFUL SITE MANAGEMENT TOOLS YOU NEED TO BUILD A SMART, PROFITABLE EV INFRASTRUCTURE**

- |                          |                       |                    |                            |
|--------------------------|-----------------------|--------------------|----------------------------|
| — Fast & easy deployment | — Monitoring          | — Notifications    | — Revenue collection       |
| — API access             | — Site administration | — Firmware updates | — Detailed pricing control |
| — Dashboard              | — Charger diagnostics | — Security         | — Power management         |
| — 24/7 end-user support  | — Reports             | — Access control   | — Vehicle management       |

**CHARGELAB SOFTWARE GIVES EV DRIVERS ALL THE FEATURES THEY'RE LOOKING FOR**

- |                           |                       |                     |                             |
|---------------------------|-----------------------|---------------------|-----------------------------|
| — Pay after you charge    | — Track your usage    | — Set notifications | — Find places to charge     |
| — Simple, private account | — Link your RFID card | — Get help, 24/7    | — Join a charging community |

For more information visit [www.chargelab.co](http://www.chargelab.co) or call (855) 599-6080

ACCESSORIES

ITEM #	ORDERING ABBREVIATION	DESCRIPTION
75916	EVPED1	Phase EV Charger Pedestal – Designed for mounting 1 Phase EV charger. Mounting 2 chargers on the pedestal requires EVPED/2/KIT
75917	EVPED/2/KIT	Accessories to install two chargers on EVPED1
75918	EVPED/PLATE	Side-by-Side Plate for EVPED1 (also requires EVPED/2/KIT)
75919	EVPED/EXTENSION	Extension pole that is required to add cable management units (EVPED/CABLE) to EVPED1 — Does NOT include cable management system (EVPED/CABLE)
75920	EVPED/CABLE	Single cable management system unit WITHOUT extension — Must be mounted to EVPED/EXTENSION. One EVPED/CABLE is required for each charger installed on the pedestal (e.g. two EVPED/CABLE are required for pedestals with 2 EV chargers on EVPED1)
75921	EVPED/COVER	Optional decorative cover for the base of EVPED1 — for use with all configurations of EVPED1

ORDERING INFORMATION

MODEL IMAGE	PEDESTAL CONFIGURATION**	REQUIRED COMPONENTS
1	Single Charger with Pedestal	75916, 75921*
2	Back-to-Back Chargers with Pedestal	75916, 75917, 75921*
3	Side-by-Side Chargers with Pedestal	75916, 75917,75918, 75921*
4	Single Charger with Pedestal and Cable Management	75916, 75919, 75920, 75921*
5	Back-to-Back Chargers with Pedestal and Cable Management	75916, 75917, 75919, 2 × 75920, 75921*
6	Side-by-Side Chargers with Pedestal and Cable Management	75916, 75917, 75918, 75919, 2 × 75920, 75921*

\*\*Note: All Configurations are shown with optional decorative base cover 75921\*

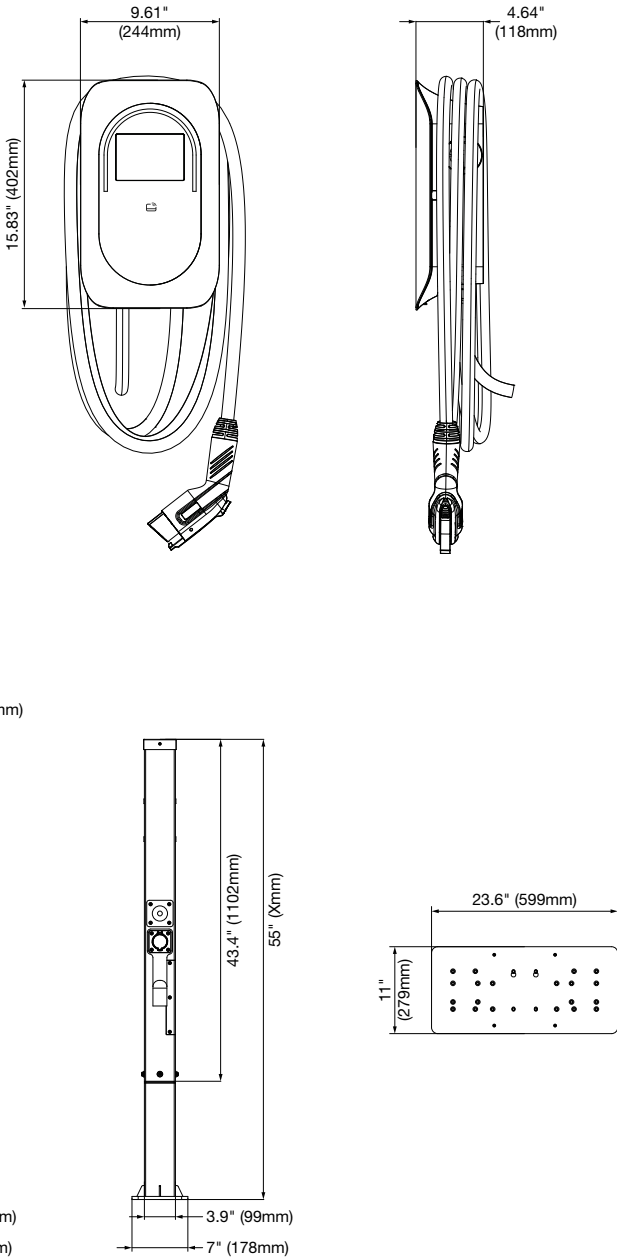


\*Pedestal Base with and without optional decorative cover 75921

PHYSICAL INFORMATION

DESCRIPTION	HEIGHT IN (MM)	WIDTH IN (MM)	DEPTH IN (MM)
PHASE EV Charger	15.83" (402)	9.61" (244)	4.64" (118)

DESCRIPTION	WEIGHT LBS. (KG)
48A PHASE EV Charger with charging cable	19.51 (8.85)
80A PHASE EV Charger with charging cable	21.38 (9.70)



LEDVANCE LLC  
181 Ballardvale Street, Suite 203  
Wilmington, MA 01887 USA  
Phone: 1-800-LIGHTBULB (1-800-544-4828)  
www.ledvanceUS.com

LEDVANCE is a registered trademark.  
All other trademarks are those of their respective owners.  
Specifications subject to change without notice.



SCAN TO FOLLOW US  
ON SOCIAL MEDIA