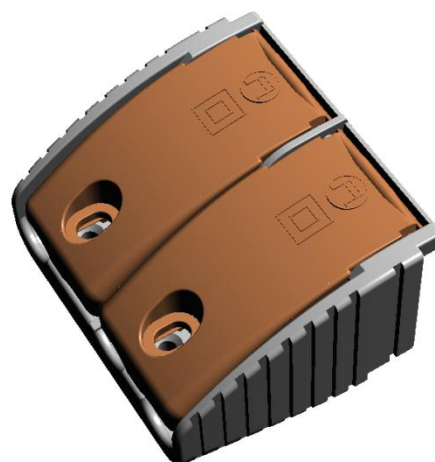


OT CABLE CLAMP B-STYLE

OPTOTRONIC® OT CABLE CLAMP B-STYLE (strain relief) can be snapped onto the compact ECG and thus converts it into an ECG suitable for independent installation.

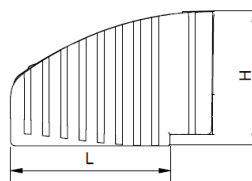


Benefits

- Comfort space for wire assembling
- Two cable clamp flaps for separate access to primary and secondary side
- Only one screw per flap for easy and fast fixation of the cables
- Suitable for different cable types

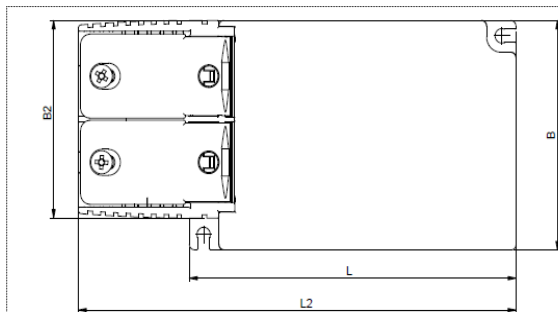
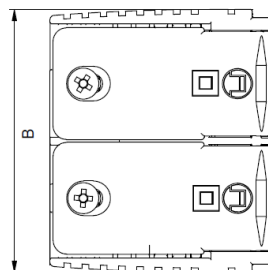
Applications

Independent applications



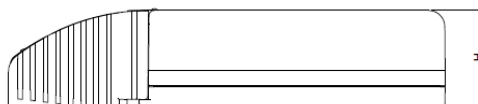
Cable Clamp B-style dimension

L	35mm
B	57.7mm
H	29.5 mm



ECG with Cable Clamp B-style dimension

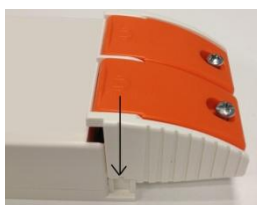
L	103mm
L2	138mm
B	67mm
B2	57,7mm
H	29,5 mm



Installation Method



1. Match cable clamp with corresponding ECG (refer to table "Matching ECG" for details).



2. Snap cable clamp into ECG as shown.



3. Unscrew cover for wire installation. Tighten screw after wire installation.

	Item	Value	Unit	Remarks
Basic Data	Cable Jacket Diameter	1,3 - 9	mm	
	Dismantling of the cable	30	mm	Max.
	Weight	26±1	g	
Tested cable types (acc. EN60598-1):	NYM-J 5x1,5			Input side only
	NYM-J 4x1,5			Input side only
	NYM-J 3x1,5			Input side only
	H05 VV-F 3x1,5			Input side only
	H05 VV-F 3x1			Input side only
	H05 VV-F 3x0,75			Input side only
	H05 VV-F 2x1			Input side only
	H03 VV-F 3x0,75			Input side only
	NYM-J 5x1,5			Output side only
	NYM-J 4x1,5			Output side only
	H05 VV-F 3x1,5			Output side only
	H05 VV-F 3x1			Output side only
	H05 VV-F 3x0,75			Output side only
	H05 VV-F 2x1			Output side only
	H03 VV-F 3x0,75			Output side only
	2xAWG 22 jacketed cable E14800			Output side only
	2xAWG 22 single wires E254881			Output side only
Matching ECG	Product name	Remarks		
	OTe	see ECG datasheet for details		
	OT FIT	see ECG datasheet for details		
	OTi DALI	see ECG datasheet for details		

Ordering information

Product name	Type	EAN10	EAN40	Pieces / box
OT Cable Clamp B-style	AA62261	NA	4052899077898	20

Disclaimer (Engineering Samples: B-Samples and C-Samples)

This product is a demonstration model from our development laboratories made available for your information only.
The model is not binding in respect to its fitness for use, i.e. service life, luminous flux, color temperature and performance.
Prior to production the design, including dimensions, is subject to modification.
You will, therefore, appreciate that at this stage of development we are unable to assume any liability also for damages which may be caused by this product.
Should you urgently require binding information for the preparation of construction data for your applications, please contact our marketing department.

Manufacturer's address:

OSRAM GmbH

Steinerne Furt 62 D-86167 Augsburg
Germany

www.osram.com

Technical support:

Kunden Service Center Germany
+49 (0)89-6213-60 00