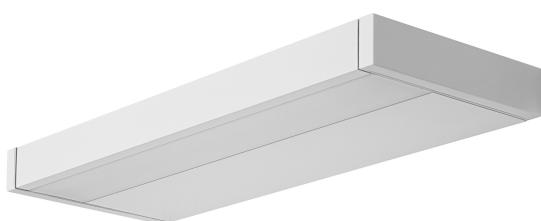


# PRODUCT DATASHEET

## Linear LED Shelf 400mm

LINEAR SHELF | Illuminated shelf for various application areas



---

### Areas of application

- Kitchens, workspaces
- Bathrooms (IP44)
- Living areas
- For indoor use only

---

### Product benefits

- Clean design, allows for an easy combination with various room styles
- Easy and quick installation
- Ideal combination of functionality and design

---

### Product features

- Color temperature: 3,000 K



TECHNICAL DATA

Electrical data

|   |               |
|---|---------------|
| Nominal wattage   | 6.50 W        |
| Nominal voltage   | 220...240 V   |
| Mains frequency   | 50...60 Hz    |
| Nominal current   | 31.000 mA     |
| Inrush current  | 2 A           |
| Max. number of luminaires per miniature circuit breaker B16 | 120           |
| Max. number of luminaires per miniature circuit breaker C10 | 120           |
| Max. number of luminaires per miniature circuit breaker C16 | 192           |
| Power factor $\lambda$                                      | > 0.5         |
| Total harmonic distortion                                   | < 70 %        |
| Protection class  | II            |
| Operating mode  | Mains voltage |

Photometrical data

|  |            |
|--|------------|
| Luminous flux                                  | 550 lm     |
| Total luminous flux of contained light sources | 700 lm     |
| Luminous efficacy                              | 91 lm/W    |
| Color temperature                              | 3000 K     |
| Light color (designation)                      | Warm White |
| Color rendering index Ra                       | ≥80        |
| Standard deviation of color matching           | ≤6 sdcn    |
| Photobiological safety group acc. to EN62778   | RG1        |
| Photobiological safety group acc. to EN62471   | RG1        |
| Beam angle                                     | 110 °      |

Dimensions & Weight

|                |           |
|----------------|-----------|
| Length         | 400.00 mm |
| Width          | 130.00 mm |
| Height         | 30.00 mm  |
| Product weight | 760.00 g  |

LINEAR SHELF 400 7.3W 840 WT

## Materials & Colors

|                 |                  |
|-----------------|------------------|
| Product color   | White            |
| Housing color   | White            |
| Body material   | Aluminum Plastic |
| Mercury content | 0.0 mg           |

## Application & Mounting

|                              |                  |
|------------------------------|------------------|
| Ambient temperature range    | -20...+40 °C     |
| Temperature range at storage | -20...+80 °C     |
| Type of connection           | Plug type C (EU) |
| Type of protection           | IP44             |
| Dimmable                     | No               |
| Mounting type                | Surface          |
| Mounting location            | Wall             |
| Application environment      | Indoor           |
| With light source            | Yes              |
| Replaceable light source     | No               |

## Lifespan

|                            |                       |
|----------------------------|-----------------------|
| Lifespan L70/B50 at 25 °C  | 30000 h <sup>1)</sup> |
| Number of switching cycles | 100000                |

<sup>1)</sup> t[h]: L70 / B50 @ 25 °C (Ta), t[h]: L80 / B10 @ 25 °C (Ta), t[h]: L90 / B10 @ 25 °C (Ta)

## Certificates & Standards

|  |                 |
|--|-----------------|
| Standards  | CE / EAC / UKCA |
| Luminaire with limited surface temperature, "D sign" | No              |
| Replaceable light source (EPREL)                     | Not replaceable |




## EQUIPMENT / ACCESSORIES

- Complete mounting and connecting accessories included

## Safety advice

- All electrical connections must be made by a qualified person.
- Caution, risk of electric shock.

## DOWNLOAD DATA

| Documents and certificates   |  | Document name                    |
|--|--|----------------------------------|
|  | User instruction / safety instructions | LINEAR_SHELF                     |
|  | Declarations of conformity             | EC_LINEARLED MAGNET_LINEAR SHELF |
|  | Declarations of conformity UKCA        | Fixed LUM                        |

## LOGISTICAL DATA

| Product code  | Packaging unit (Pieces/Unit) | Dimensions (length x width x height) | Gross weight | Volume                |
|---------------|------------------------------|--------------------------------------|--------------|-----------------------|
| 4058075575738 | Folding box<br>1             | 51 mm x 135 mm x 430 mm              | 921.00 g     | 2.96 dm <sup>3</sup>  |
| 4058075575745 | Shipping box<br>8            | 425 mm x 420 mm x 160 mm             | 8121.00 g    | 28.56 dm <sup>3</sup> |

The mentioned product code describes the smallest quantity unit which can be ordered. One shipping unit can contain one or more single products. When placing an order, for the quantity please enter single or multiples of a shipping unit.

## DISCLAIMER

Subject to change without notice. Errors and omission excepted. Always make sure to use the most recent release.