

# PRODUCT DATASHEET

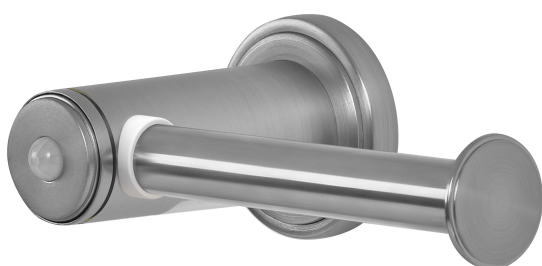
## Bathroom Sensor Toilet Paper Holder

BATHROOM | Bathroom gadget series with motion and daylight sensor

---

### Areas of application

- Bathrooms (IP44)



---

### Product benefits

- Easy and fast mounting on nearly every surface (adhesive tape or screws)
- Economical operation due to low power consumption
- Quick and easy solution to add value to your bathroom
- Ideal combination of functionality and design

---

### Product features

- Color temperature: 3,000 K
- PIR motion and daylight sensor
- Allows a nice and soft warm lighting effect



TECHNICAL DATA

Electrical data

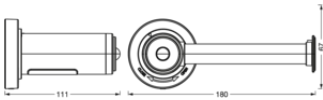
Nominal wattage	0.18 W
Nominal voltage	4,5 V
Nominal current	40.000 mA
Inrush current	40 mA
Inrush current time T <sub>h50</sub>	40 µs
Protection class	III

Photometrical data

Luminous flux	10 lm
Color temperature	3000 K
Light color (designation)	Warm White
Color rendering index Ra	≥80
Standard deviation of color matching	≤6 sdc <sub>m</sub>
Photobiological safety group acc. to EN62778	RG0
Photobiological safety group acc. to EN62471	RG0
Beam angle	100 °

Dimensions & Weight

Length	180.00 mm
Width	67.00 mm
Height	111.00 mm
Product weight	120.00 g



PGBATHROOM TOILETPAPER  
HOLDER SEN IP44MiPRCmnk

Materials & Colors

Product color	Silver
Housing color	Silver

Body material	Acrylonitrile butadiene styrene (ABS)
---------------	---------------------------------------

### Application & Mounting

Ambient temperature range	-20...+30 °C
Type of protection	IP44
Dimmable	No
Mounting type	Surface
Application environment	Indoor
With light source	Yes
Replaceable light source	No

### Lifespan

Number of switching cycles	100 000
----------------------------	---------

### Sensor

Type of sensor	Motion / Daylight
Sensor controlled switching time	20 s

### BATTERY

Type of Battery	Alkaline
Battery size [GMS]	AAA
Number of included batteries	3
Nominal voltage of battery	1.5 V
Nominal capacity of battery	1100 mAh

### Certificates & Standards

Standards	CE / UKCA
Ball shot safe	No
Replaceable light source (EPREL)	Not replaceable

### EQUIPMENT / ACCESSORIES



- Accessories for flexible mounting options included
- Batteries included

### Safety advice

- This product is not a toy. It should not be left unattended in the hands of children or operated by children.
- Not designed as a replacement for conventional lighting in private household.

- Battery Warning: Keep out of reach for children. Swallowing can lead to chemical burns, perforation of soft tissue, and death. Severe burns can occur within 2 hours of ingestion. Seek medical attention immediately.
- If the battery compartment (if applicable) does not close securely, stop using the product and keep it away from children. If you think batteries might have been swallowed or placed inside any part of the body, seek immediate medical attention.
- Please avoid: Maximal ambient temperature: +35 °C. Replacement of a battery with an incorrect type that can defeat safeguard (for example, in the case of some lithium battery types). Altitude during operation: 2000 m. Disposal of a battery into fire or a hot oven, or mechanically crushing or cutting of a battery, that can result in an explosion.

DOWNLOAD DATA

Documents and certificates		Document name
	Declarations of conformity	BATHROOM SENSOR IP44
	Declarations of conformity UKCA	BATHROOM SEN

LOGISTICAL DATA

Product code	Packaging unit (Pieces/Unit)	Dimensions (length x width x height)	Gross weight	Volume
4058075758643	Folding box 1	77 mm x 122 mm x 183 mm	196.00 g	1.72 dm³
4058075758650	Shipping box 6	262 mm x 247 mm x 215 mm	1456.00 g	13.91 dm³

The mentioned product code describes the smallest quantity unit which can be ordered. One shipping unit can contain one or more single products. When placing an order, for the quantity please enter single or multiples of a shipping unit.

DISCLAIMER

Subject to change without notice. Errors and omission excepted. Always make sure to use the most recent release.