

PRODUCT DATASHEET

SURFACE MOUNT FRAME

SURFACE MOUNT FRAME | Surface mount frame for MCU SELECT and MCU TOUCH product families



Areas of application

- Rooms with walls where installation of flush-mounted boxes is not possible

Product benefits

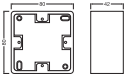
- Easy to mount on walls
- Rear or side cable entry possible

Product features

- Wall mounting frame for mounting CU SELECT and CU TOUCH products

TECHNICAL DATA

Dimensions & Weight



| | |
|----------------|----------|
| Length | 80 mm |
| Width | 80 mm |
| Height | 42 mm |
| Product weight | 135.00 g |

Colors & materials

| | |
|---------------|-------|
| Product color | White |
|---------------|-------|






Capabilities

| | |
|----------------------|------------------|
| Type of installation | Surface mounting |
|----------------------|------------------|

Certificates & Standards

| | |
|---------------------------|-----------------|
| Approval marks – approval | CE / UKCA / EAC |
|---------------------------|-----------------|

DOWNLOAD DATA

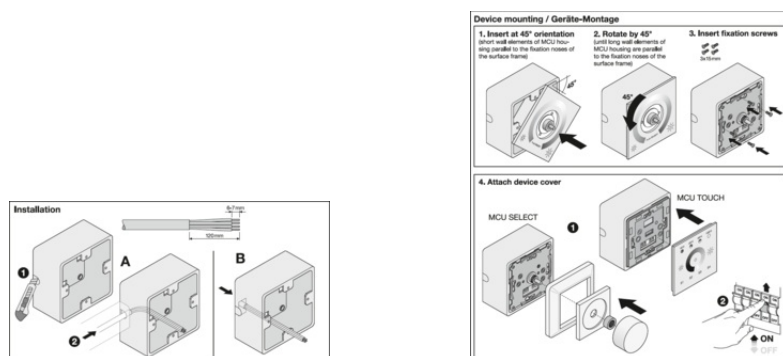
| Documents and certificates | | Document name |
|--|--|------------------------------|
|  | User instruction / safety instructions | SURFACE MOUNT FRAME |
|  | Legal information | Legal Insert DALI COMPONENTS |
|  | Declarations of conformity | MCU DALI |
|  | Declarations of conformity UKCA | MCU DALI |
| Tender texts | | Document name |
|  | Tender documents | SURFACE MOUNT FRAME-EN |

LOGISTICAL DATA

| Product code | Packaging unit (Pieces/Unit) | Dimensions (length x width x height) | Gross weight | Volume |
|---------------|------------------------------|--------------------------------------|--------------|-----------------------|
| 4058075843561 | Folding box 1 | 45 mm x 86 mm x 86 mm | 152.00 g | 0.33 dm ³ |
| 4058075843578 | Shipping box 36 | 290 mm x 186 mm x 280 mm | 5809.00 g | 15.10 dm ³ |

The mentioned product code describes the smallest quantity unit which can be ordered. One shipping unit can contain one or more single products. When placing an order, for the quantity please enter single or multiples of a shipping unit.

ADDITIONAL CATALOG INFORMATION



References / Links

– For current information see www.ledvance.com/light-management-systems

DISCLAIMER

Subject to change without notice. Errors and omission excepted. Always make sure to use the most recent release.