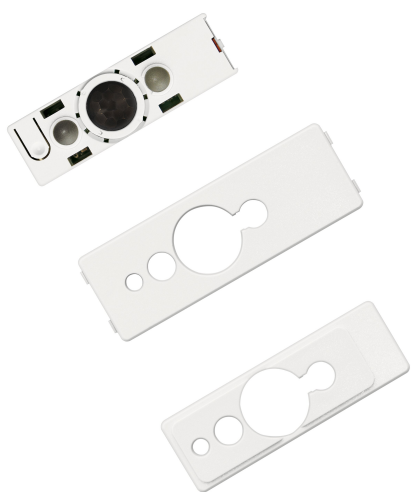


## PRODUCT DATASHEET DALIECO LS/PD LI KIT

DALieco LS/PD LI | Sensors for light management systems



---

### Areas of application

- Office luminaires
- Ceiling installation via LS/PD CI KIT possible

---

### Product benefits

- VDE/VDE EMC certified system
- $V(\lambda)$  corrected light sensor element
- Individual activation/deactivation of light and presence sensor via remote control
- Presence detection angle adjustable between 40...90° via integrated shutters

---

### Product features

- Light and presence sensor
- Presence detection via passive IR element
- Function indicator with two-color LED
- Integrated infrared remote control receiver
- Integrated pushbutton for automatic startup/deactivation of infrared receiver
- Halogen free polycarbonate plastic housing

## TECHNICAL DATA

### Electrical data

Mains frequency	0 Hz
-----------------	------

### Dimensions & Weight

Length	48.00 mm
Width	15.00 mm
Height	17.00 mm
Product weight	33.00 g

### Colors & materials

Product color	Grey
---------------	------

### Temperatures & operating conditions

Ambient temperature range	-20...+50 °C
---------------------------	--------------

### Capabilities

Dimmable	No
Dimming interface	DALI
Maximum installation height	5 m
Detection area	7 m <sup>1)</sup>
Detection angle	80 ° <sup>2)</sup>
Type of installation	Ceiling integration/Luminaire integration
Operating range, light sensor	20...800 lx <sup>3)</sup>

1) Maximum diameter


2) Approximately



3) Approximately, measured at the sensor

### Certificates & Standards

Approval marks – approval	CE
Protection class	II
Type of protection	IP20

## DOWNLOAD DATA

Documents and certificates		Document name
	User instruction / safety instructions	341218_DALIeco LS/PD LI

Documents and certificates		Document name
	Declarations of conformity	341817_CE_declaration_DALlecosystem
	Declarations of conformity	EU Declaration of Conformity 2019_9C1_2874588_EN_09

LOGISTICAL DATA

Product code	Packaging unit (Pieces/Unit)	Dimensions (length x width x height)	Gross weight	Volume
4008321988652	Folding box 1	231 mm x 45 mm x 47 mm	69.00 g	0.49 dm <sup>3</sup>
4008321789310	Shipping box 25	223 mm x 197 mm x 179 mm	1706.00 g	7.86 dm <sup>3</sup>

The mentioned product code describes the smallest quantity unit which can be ordered. One shipping unit can contain one or more single products. When placing an order, for the quantity please enter single or multiples of a shipping unit.

DISCLAIMER

Subject to change without notice. Errors and omission excepted. Always make sure to use the most recent release.