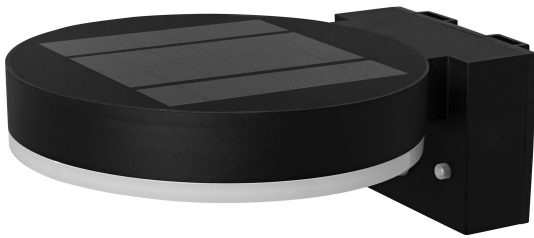


# PRODUCT DATASHEET

## ENDURA Style Solar Wall Sensor Single Circle 6W Black

ENDURA® STYLE SOLAR SINGLE CIRCLE | Solar-powered lantern luminaires with motion and light sensor, single circle



---

### Areas of application

- Outdoor use (IP44)
- Areas where no power supply is available

---

### Product benefits

- Demand based lighting and energy saving thanks to motion and daylight sensor
- Easy adjustment of daylight and motion detection via push switch
- Energy-efficient thanks to LED technology
- Easy and quick installation

---

### Product features

- Solar powered outdoor LED luminaire
- PIR motion detector and daylight sensor
- 3 operating modes selectable
- Operating mode 1: light continuous on with 200 lumen (Max. 2.5 hours at full charge)
- Operating mode 2: light continuous on with 75 lumen (Max. 8 hours at full charge), switches to 300 lumen when moving (Max. 100 times lit at full charge)



- Operating mode 3: light off, switches to 400 lumen when moving (Max. 100 times lit at full charge)
- Battery charging via solar panel
- Battery technology: lithium-ion
- Stainless steel housing

TECHNICAL DATA

Electrical data

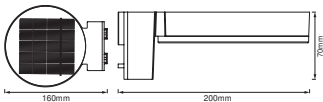
Nominal wattage	6.00 W
Nominal voltage	3,2 V
Mains frequency	0 Hz
Nominal current	1700.000 mA
Protection class	III
Operating mode	Battery

Photometrical data

Luminous flux	400 lm
Total luminous flux of contained light sources	600 lm
Luminous efficacy	67 lm/W
Color temperature	3000 K
Light color (designation)	Warm White
Color rendering index Ra	≥80
Standard deviation of color matching	6 sdcm
Photobiological safety group acc. to EN62778	RG1
Photobiological safety group acc. to EN62471	RG0

Dimensions & Weight

Length	200.00 mm
Width	160.00 mm
Height	70.00 mm
Product weight	400.00 g



ENDURA STYLE SOL WALL  
CIRCLE 6W BK

Materials & Colors

Product color	Black
---------------	-------

Housing color	Black
Body material	Polycarbonate (PC) Acrylonitrile butadiene styrene (ABS)
Cover material	Polycarbonate (PC)
Mercury content	0.0 mg

### Application & Mounting

Ambient temperature range	-20...+40 °C
Temperature range at storage	-20...+70 °C
Type of protection	IP44
Protection class IK (shock resistance)	IK03
Dimmable	Yes
Mounting type	Surface
Mounting location	Wall
Application environment	Outdoor
With light source	Yes
Replaceable light source	No

### Lifespan

Lifespan L70/B50 at 25 °C	50000 h <sup>1)</sup>
Number of switching cycles	12500

<sup>1)</sup> t[h]: L70 / B50 @ 25 °C (Ta), t[h]: L80 / B10 @ 25 °C (Ta), t[h]: L90 / B10 @ 25 °C (Ta)

### Sensor

Type of sensor	Light / Motion
Sensor technology	Passive infrared (PIR)
Sensor detection angle	90 °
Sensor controlled switching time	15 s
Detection range of motion sensor	6 m
Detection threshold of daylight sensor	0...100 lx

### BATTERY

Type of Battery	Lithium ion
Battery size [GMS]	18650
Number of included batteries	1
Nominal voltage of battery	3.7 V
Nominal capacity of battery	2200 mAh

Battery charging time	8 h
-----------------------	-----

### Emergency lighting

Type of emergency light operation	Non-maintained
Luminous flux in maintained operation mode	-
Luminous flux in emergency operation mode	-

### Certificates & Standards

Standards	CE / EAC / UKCA
Luminaire with limited surface temperature, "D sign"	No
Replaceable light source (EPREL)	Not replaceable




### EQUIPMENT / ACCESSORIES

- Complete mounting and connecting accessories included

### Safety advice

- If the battery compartment (if applicable) does not close securely, stop using the product and keep it away from children. If you think batteries might have been swallowed or placed inside any part of the body, seek immediate medical attention.
- Please avoid: Maximal ambient temperature: +35 °C. Replacement of a battery with an incorrect type that can defeat safeguard (for example, in the case of some lithium battery types). Altitude during operation: 2000 m. Disposal of a battery into fire or a hot oven, or mechanically crushing or cutting of a battery, that can result in an explosion.

### DOWNLOAD DATA

Documents and certificates		Document name
	User instruction / safety instructions	ENDURA STYLE SOLAR WALL SENSOR SINGLE CIRCLE
	Declarations of conformity	ENDURA STYLE SOL
	Declarations of conformity UKCA	Fixed LUM

### LOGISTICAL DATA

Product code	Packaging unit (Pieces/Unit)	Dimensions (length x width x height)	Gross weight	Volume
4058075392762	Folding box 1	172 mm x 82 mm x 213 mm	495.00 g	3.00 dm <sup>3</sup>

Product code	Packaging unit (Pieces/Unit)	Dimensions (length x width x height)	Gross weight	Volume
4058075392779	Shipping box 4	352 mm x 190 mm x 242 mm	2373.00 g	16.18 dm³

The mentioned product code describes the smallest quantity unit which can be ordered. One shipping unit can contain one or more single products. When placing an order, for the quantity please enter single or multiples of a shipping unit.

DISCLAIMER

Subject to change without notice. Errors and omission excepted. Always make sure to use the most recent release.